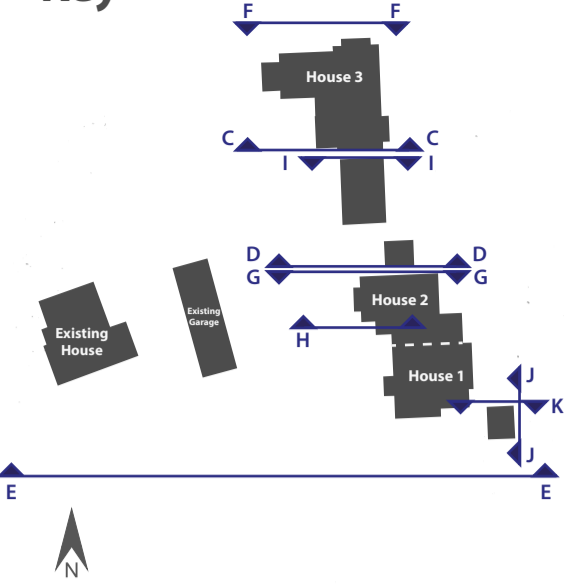


Key

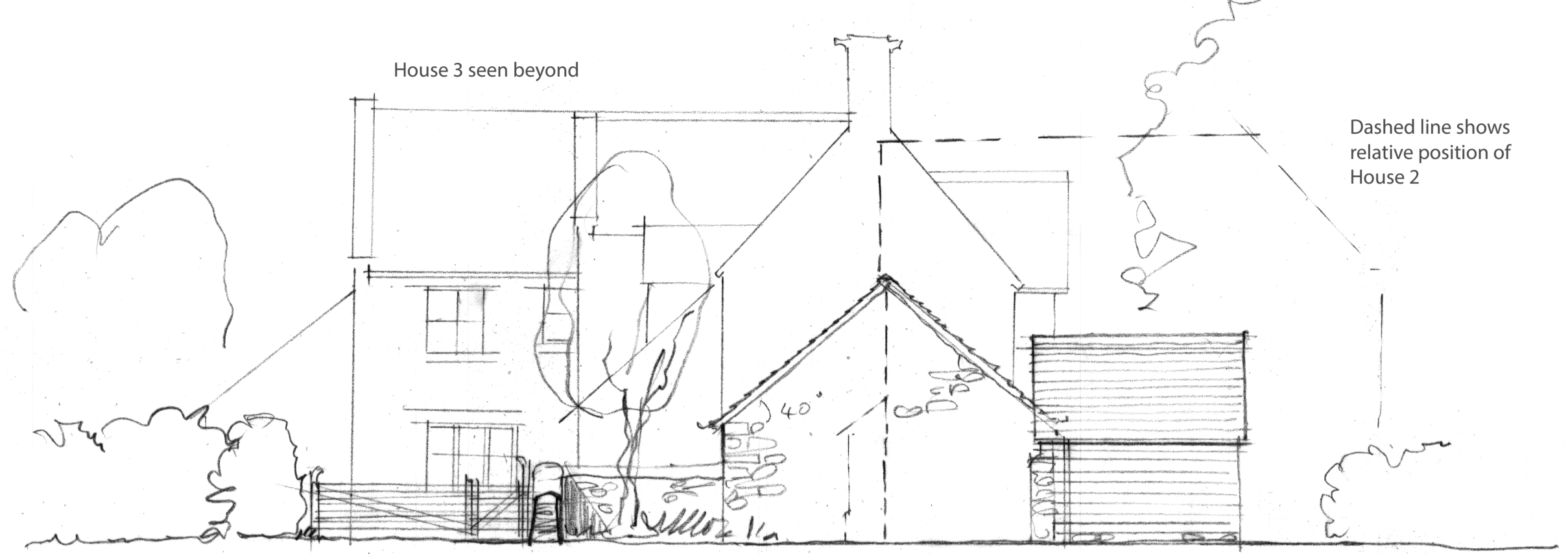


**Materials**

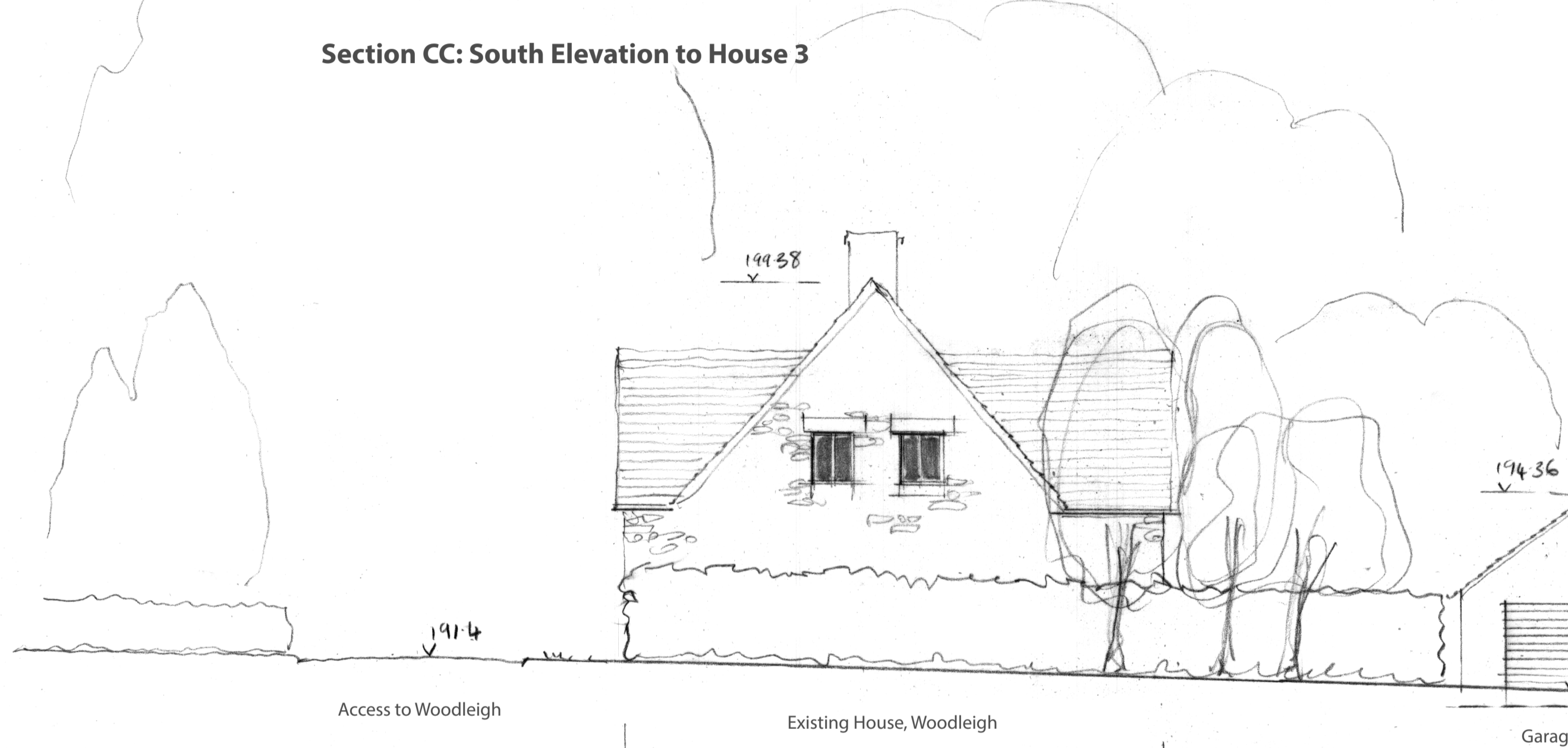
- Natural stone walling
- Artificial stone roofing to Houses, slate roofing to outbuildings (carport and stores)
- Elements of timber boarding (upper elements of catclides, eastern bay to House 3, parts of carport and stores)
- Natural stone detailing (lintels, cills and chimneys)
- Oak posts and lintels to porch serving House 2 and carport serving House 3
- Painted timber windows and doors



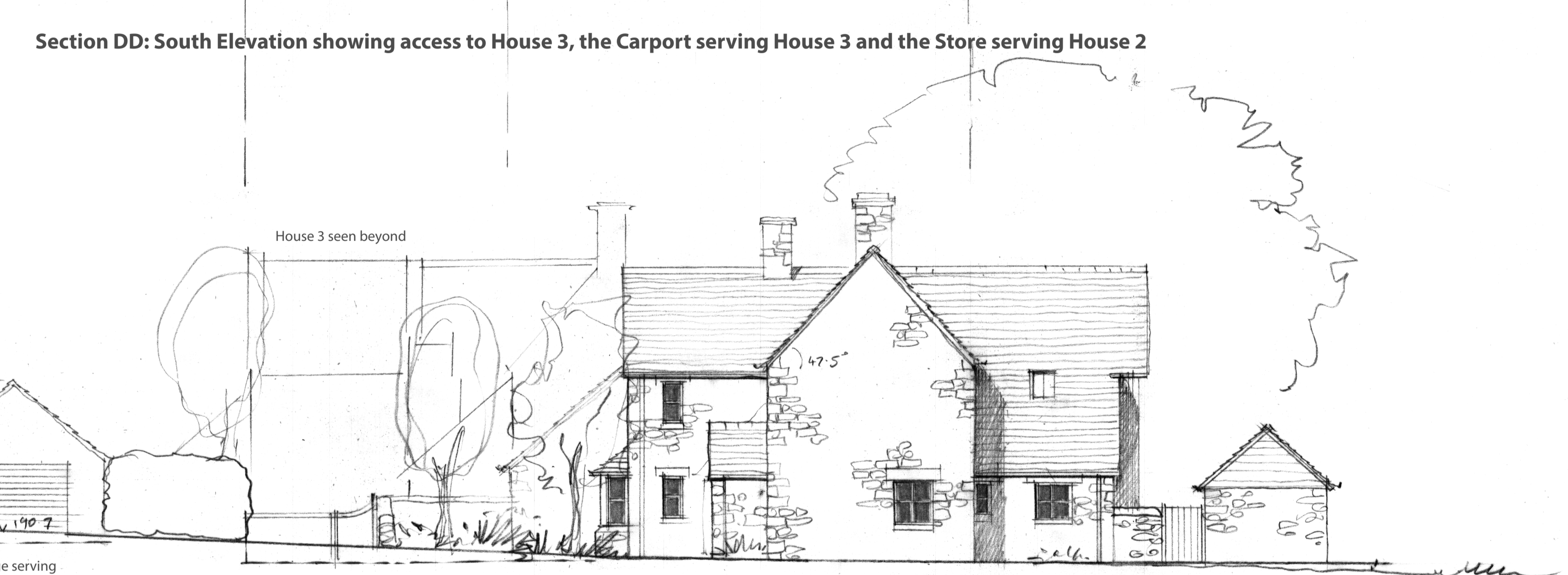
Section CC: South Elevation to House 3



Section DD: South Elevation showing access to House 3, the Carport serving House 3 and the Store serving House 2



Section EE: South Elevation along Access Road



Section HH: South Elevation to House 2



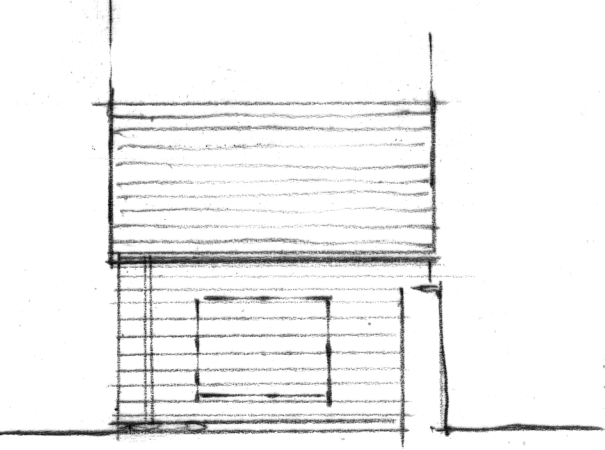
Section FF: North Garden Elevation to House 3



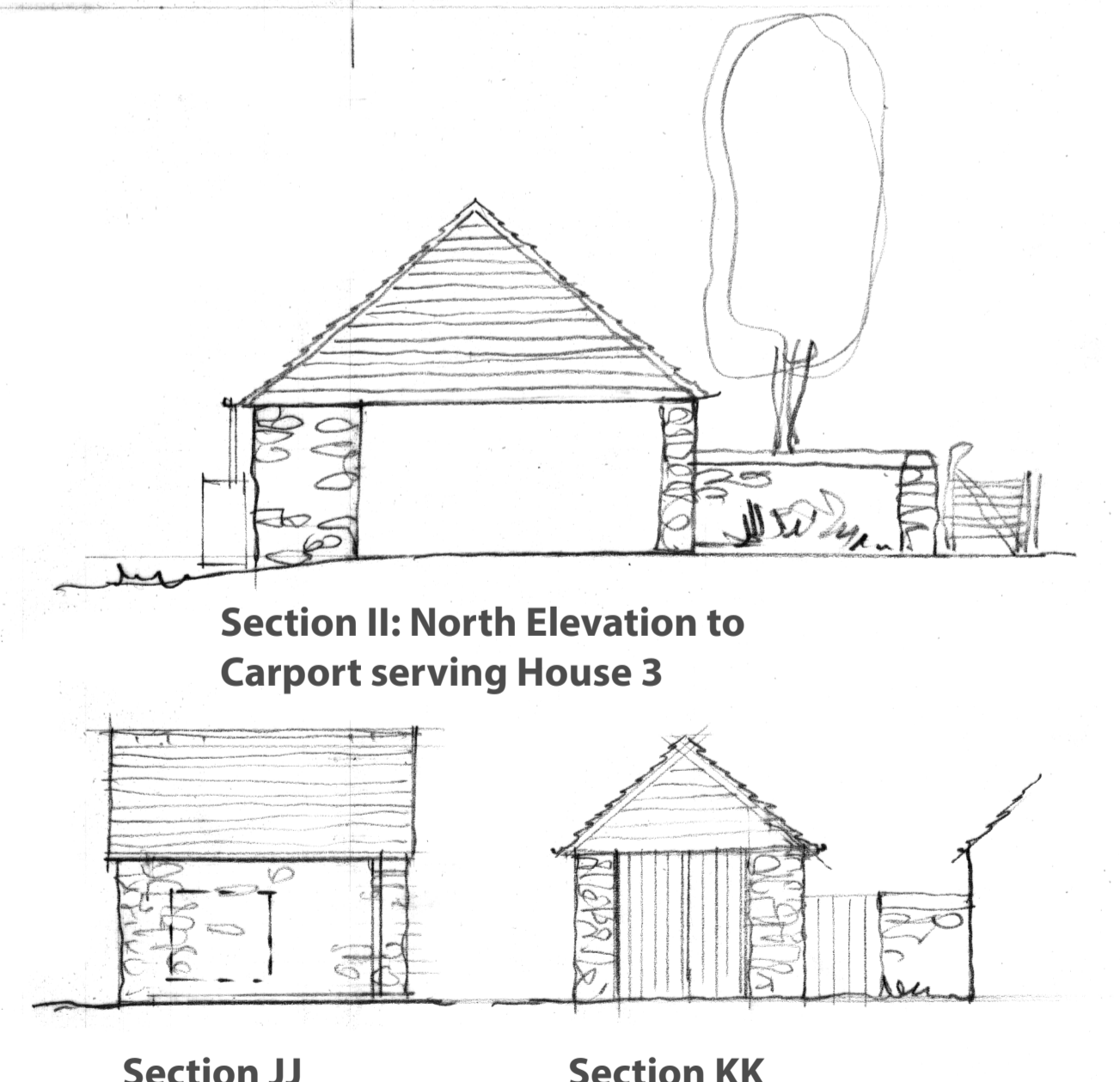
Section GG: North Elevation to House 2



Section II: North Elevation to Carport serving House 3



Store serving House 2, North Elevation



Section KK

Store serving House 1

**Planning**  
 This drawing has been prepared for workstages up to planning application purposes only and is not intended for construction. The scale bar should only be used to check the drawing has been reproduced to the correct size. No responsibility can be accepted for errors made by others in 'scaling' from this drawing.

Scale 1:100 5m

Tyack Architects Ltd own copyright of the original design work in the drawings, documents and digital files which cannot be copied, loaned or disclosed without written agreement. Please refer to our Standard Terms of Business.



Tyack Architects Ltd  
 The Mann Institute  
 Oxford Street  
 Merton-in-Marsh  
 Gloucestershire, GL56 0LA  
 t: 01608 650 490  
 f: 01608 651 963  
 e: mail@tyackarchitects.com  
 w: tyackarchitects.com

**PLANNING**  
**Proposed Elevations 2**  
 Woodleigh, Brockhampton  
 Malcolm Turner  
 Scale: 1:100@A1  
 Drawn/Checked: MS/SC  
 Date: July 2024  
 Drg No: 3121-015 Rev: A

Copyright © Tyack Architects Ltd